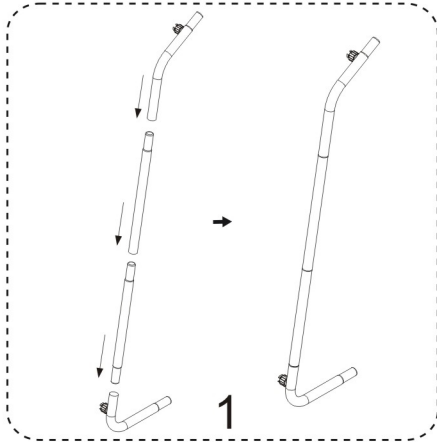
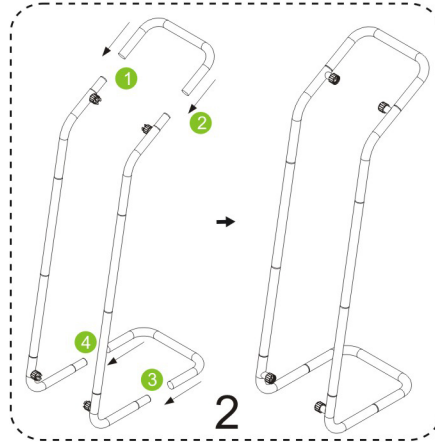


INSTRUCTION

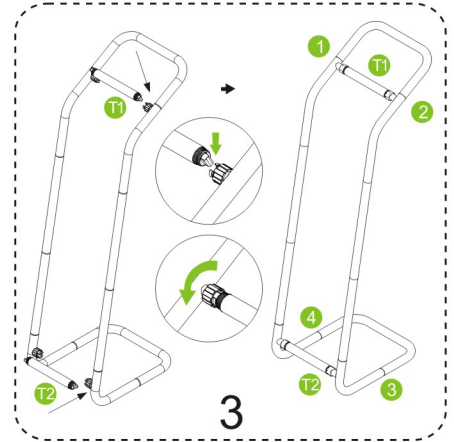
iPad Literature stand



Firstly connect the tubes of two sides (left & right)



Connect the tubes of the top & bottom

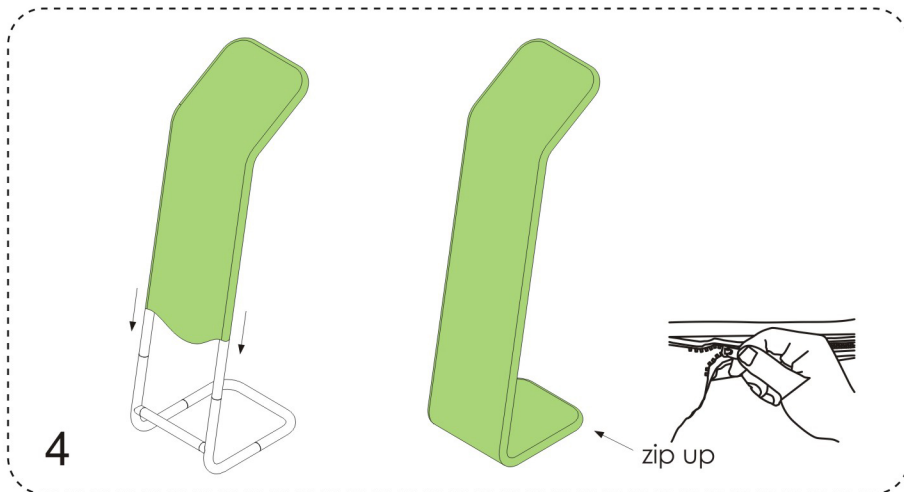


Then connect the middle tubes

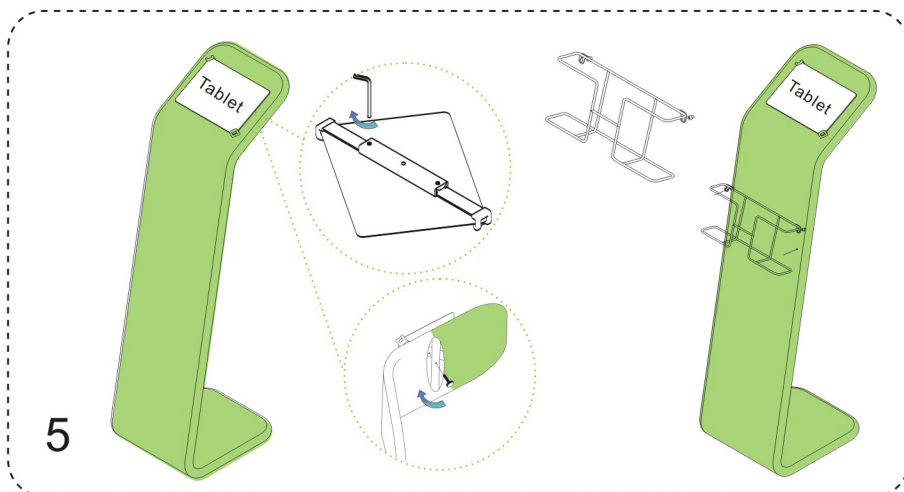


The plastic screwing connector at all corners section
DON'T screw completely but around 90% fastening

Graphic & iPad Setup Instruction



Wrap up the frame with the graphic from top to bottom, then zip up.



Put the iPad holder on the stand and fix with screws, then put the literature holder in place.

